

STORM DAMAGE, KINAMA/KAMENGE AREAS OF BUJUMBURA, BURUNDI

Analysis with Pleiades Data Acquired 14 February 2014 & QuickBird Data Acquired 5 September 2013

This map illustrates satellite-detected areas affected by mud and water flow in the Kinama/Kamenge neighborhoods of Bujumbura, Burundi. Heavy rains on 9 February caused numerous flash floods across the city and surrounding areas, and UNOSAT analyzed imagery acquired by the Pleiades satellite on 14 February 2014. About 553 ha of area

seem to be affected by the mud/water flow and ~1140 ha are potentially affected. Satellite imagery was poor quality with haze affecting clarity, and urban areas precise detection is difficult, and thus affected areas may be underestimated. This is a preliminary analysis & has not yet been validated in the field. Please send ground feedback

Disaster coverage by the International Charter 'Space and Major Disasters'. For more information on the Charter, which is about assisting the disaster relief organizations with multi-satellite data and information, visit www.disasterscharter.org



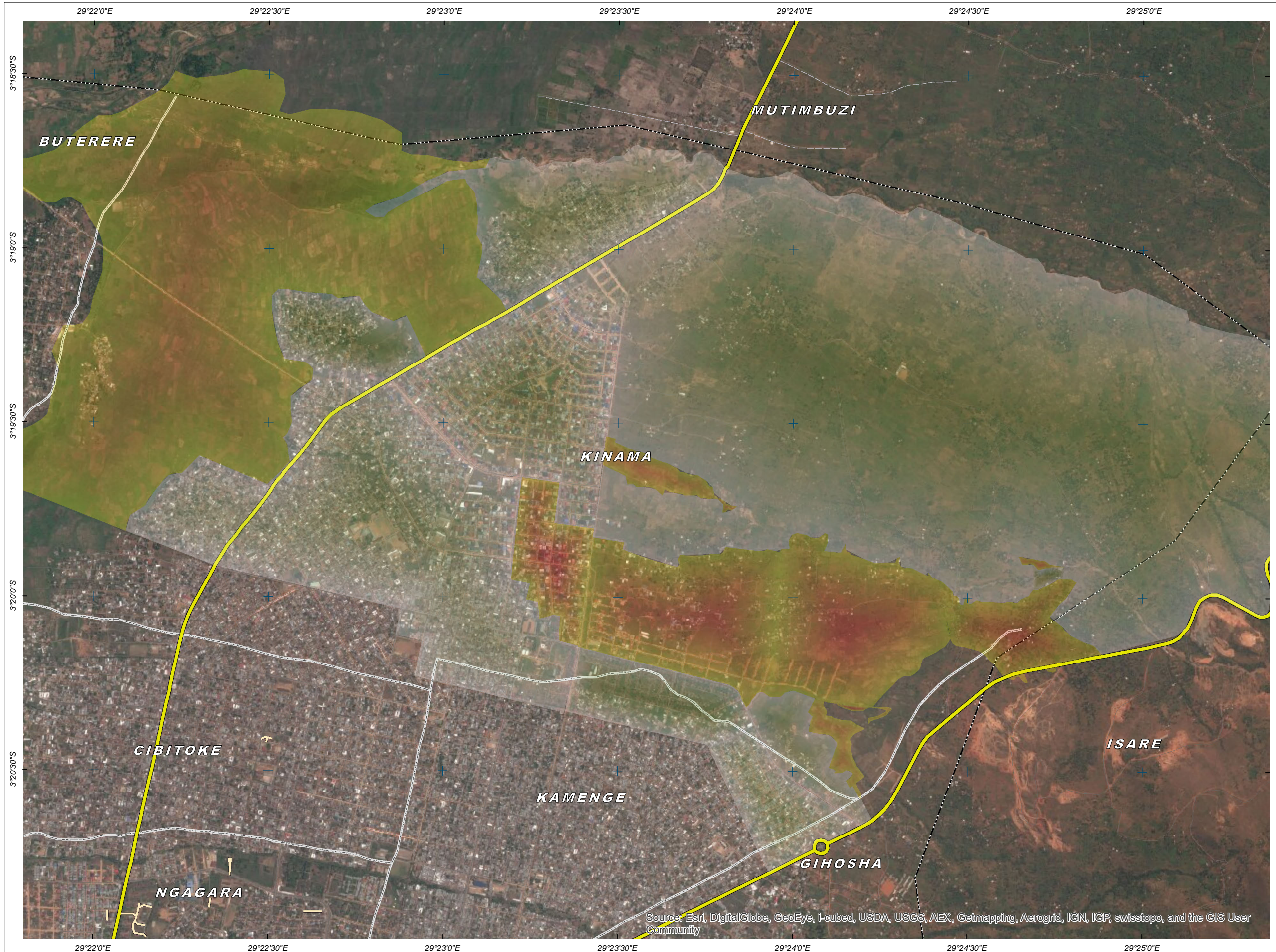
Storm and Floods



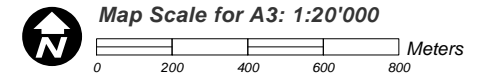
Production Date: 17.02.2014

Version 1.0

Activation Number: FL20140211BDI



- LEGEND**
- Affected Zone
 - Potentially Affected Zone
 - Highway/Primary Rd.
 - Secondary Rd
 - Local/Urban Rd.
 - Footpath
 - Administrative Limit



Satellite Data (1): Pleiades
 Imagery Dates: 14 February 2014
 Resolution: 50 cm
 Copyright: CNES 2013 - Distribution Astrium Services / Spot Image
 Source: Distribution Astrium Services / Spot Image
 Satellite Data (2): QuickBird
 Imagery Date: 5 September 2013
 Copyright: DigitalGlobe
 Source: USGS / HDDS
 Road Data: OSM
 Other Data: USGS, UNCS, NASA, NGA
 Analysis: UNITAR / UNOSAT
 Production: UNITAR / UNOSAT
 Analysis conducted with ArcGIS v10.1

Coordinate System: WGS 1984 UTM zone 35S
 Projection: Transverse Mercator
 Datum: WGS 1984
 Units: Meter

The depiction and use of boundaries, geographic names and related data shown here are not warranted to be error-free nor do they imply official endorsement or acceptance by the United Nations. UNOSAT is a program of the United Nations Institute for Training and Research (UNITAR), providing satellite imagery and related geographic information, research and analysis to UN humanitarian and development agencies and their implementing partners.

This work by UNITAR/UNOSAT is licensed under a Creative Commons Attribution-NonCommercial-ShareAlike 3.0 Unported License.



UNOSAT

Contact Information: unosat@unitar.org
 24/7 Hotline: +41 76 487 4998
www.unitar.org/unosat

Source: Esri, DigitalGlobe, GeoEye, i-cubed, USDA, USGS, AEX, Getmapping, Aerogrid, IGN, ICP, swisstopo, and the GIS User Community